

Music  
for  
the  
Seasons

1532  
1.40

# PENTECOST SUNDAY

*Double Alleluia*


by Richard Felciano

Unison Male Choir,  
Organ, Electronic Tape

World Library Publications  
3825 N. Willow Road, Schiller Park, Illinois 60176

## PERFORMANCE NOTES

Director uses stop watch (or other watch) to determine the proper moment for cues.

**7"**  
  
**VOICES** Denotes cue sign, indicating that voices enter at seven seconds into the piece, sing the passage indicated at the given tempo, and then drop out until the next vocal cue. The organ proceeds in like manner.

 Denotes breathy whisper

Vertical dotted line denotes simultaneous events

Where glissando is indicated, move immediately away from the starting pitch, thus creating a constant glissando rather than one which occurs only at the end of the duration.

Dynamics indicated are general guidelines and will vary according to speaker size, organ resources, etc.

The score is meant as a general guide. The voices and organ should interact freely with and in the style of the tape part.

The volume of the cassette should be set so that at its loudest point the tape sound fills the room.

For Robert Snow and the men of St. John Fisher Parish Choir, Pittsburgh, Pennsylvania,  
commissioned by the Music Commission Diocese of Pittsburgh,  
for Pentecost Sunday, May 16, 1967

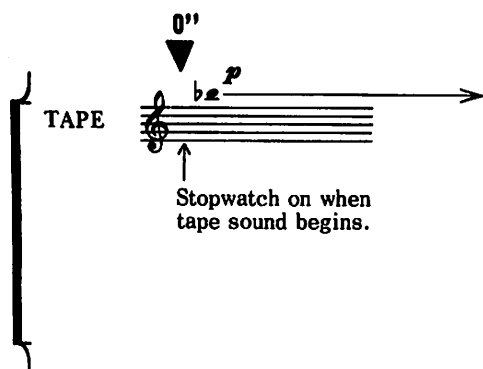
# PENTECOST SUNDAY

## Double Alleluia

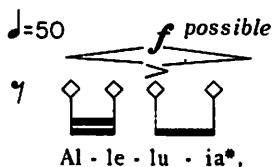
Unison Male Choir, Organ, Electronic Tape

Ps 104:30

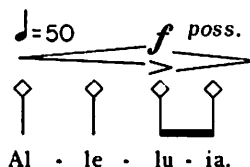
Richard Felciano



7"



16"



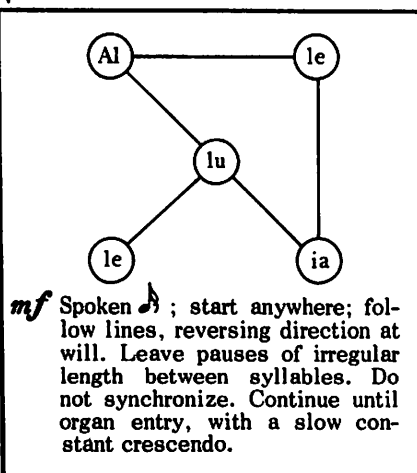
(\*The third syllable of this word should always be whispered with a strong accent and a higher pitch than that of the surrounding syllables.)

26"

Each singer whispers the word "Alleluia," at will, repeatedly and as loudly as possible. Use a free speech rhythm and leave pauses of *irregular* length between the repetitions. Accent the third syllable of the word. *Make no attempt to synchronize.* Continue until next cue.

SEGUE  
(without break  
between the  
two textures)

35"



1532

Electronic tape (cassette) available, WLP 1533.

*ff*

Send forth your Spi-rit,

ORGAN

bbb *ff*

Arpeggiate tone cluster by rolling flat of left hand, palm to finger tip, over length of keyboard.

Full organ *fff**legato*

6

3

Ped.

Man.

3

1' 23"

♩ = 55 ca.

*mf*

get pitch here

long, slow gliss. (moan)

*f*

(imitate tape)

Freely, not too fast

*p**mf*

sub.

gliss. sim.

*f*

simile

and

they

shall

be

cre - a -

8' principal (voice support only; not to be prominent)

*mp* slow gliss. (moan!) *ff* **>**

ted;

1' 57"

**Mysteriously**

Voices should emerge from tape sounds and return, sliding between pitches in a weak manner; use white tone, *no vibrato*; effect distance, as though lost in the sounds of the tape. Muffle the tone by cupping both hands firmly over the mouth (as if blowing into them on a cold day); open the mouth fully and articulate each syllable carefully.

Slower,  $\text{♩} = 50$ 

High pitch on tape emerges right after this phrase.

*mf* gliss. *gliss.*

and you shall re-new the face of the earth.

Slower,  $\text{♩} = 50$ 

*mp* celeste or flues 8'

2' 18"

 $\text{♩} = 60$ *ff* without hands  
gliss. **>**

Slower,  $\text{♩} = 50$   
Intense *ff* always

Al - le - lu - ia. Come, Ho - ly Spi - rit,

Gt. **>**

reeds and mixtures only;  
manuals coupled;  
Swell open

Ped. **>**

Gt. **>**

fill the hearts of the faith - ful. and kin - dle in them the fire of your

L.H.

Gt.

Slowly,  $\text{♩} = 46$

*always ff*

*dolce*

love. ————— the fire of your love. —

R.H. Sw.

Hold for four beats after tape sound stops

flues 8', 4' only

Ped.  $\text{>}$  Box open through beginning of fermata; close box only on last three beats of entire measure.

Man.

TAPE (re-enters)

VOICES

ORGAN

Voices release with first waver sound.

immediately after

2" after

2"  $\text{♩} = 60$

Hold chord for 2" after tape sound disappears.

Registrate for four clearly discernable pitches here.

Follow tape; repeat chord as directed.

- 4

softer 8'

softest 8'

Ped. soft flue 16' man. coup. 8'

Engraved and printed in U.S.A.

Leave one full second of silence after the final organ chord, then repeat one single whispered "Alleluia," as at 7" on page 3. In concert performance, the work should conclude with the final tape sound.

